



GARRETT ANTIN

INTERIOR DESIGN PORTFOLIO



rockwellgroup

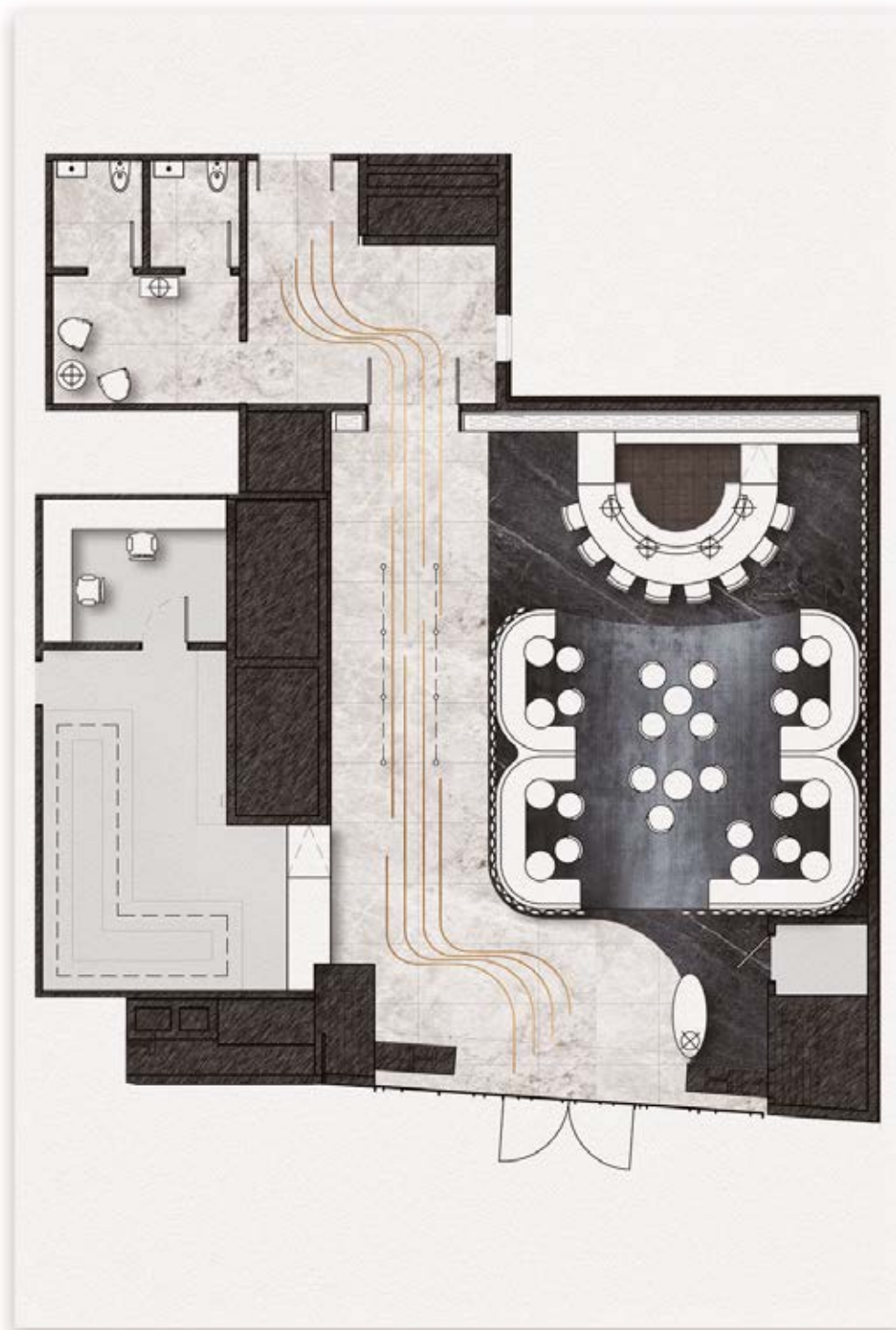
RELATED



ROLE : LEAD INTERIOR DESIGNER
FIRM : ROCKWELL GROUP

PHASES : CONCEPT THROUGH CONSTRUCTION
STATUS : IN CONSTRUCTION

SITTING ATOP THE OBSERVATION DECK AT HUDSON YARDS, PEAK RESTAURANT IS A CELEBRATORY SPACE WITH INCOMPARABLE CITY VIEWS. THE CLIENT (RELATED GROUP) REQUESTED A CLEAN, FORWARD THINKING DESIGN THAT SPOKE TO THE OVERALL DEVELOPMENT'S IDENTITY. TIMELESS MODERN LUXURY WAS A GIVEN, BUT THE KEY DIRECTIVE REMAINED, "IT'S ABOUT THE VIEW."



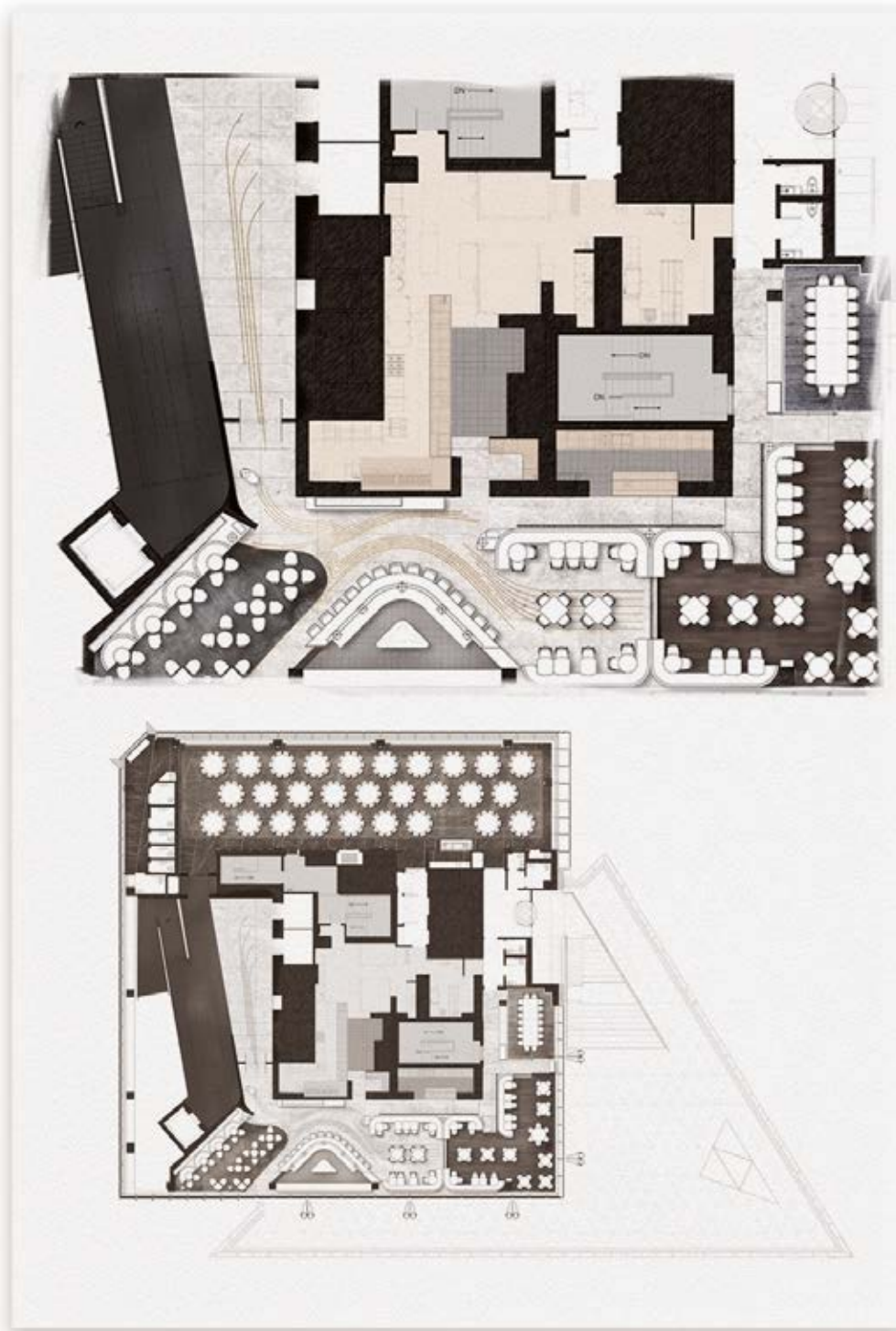
GUESTS ENTER THROUGH AN INTIMATE COCKTAIL LOUNGE. HERE ONE CAN GRAB A DRINK WHILE WAITING FOR THE DEDICATED EXPRESS ELEVATOR TO LEVEL 101.

YOUR FIRST POINT OF ENGAGEMENT IS A SCULPTURAL, CARVED, SOLID-STONE HOST DESK. PILLOWED METAL MESH SCREENS FORM A ROOM WITHIN A ROOM, AND UP-LIGHTING INVOKES A SENSE OF INTIMACY. OFFSET CURVES OF BRONZE ARE WATER-JET CUT AND INLAID INTO SLABS OF ITALIAN MARBLE TO SERVE AS A WAY-FINDING DEVICE.





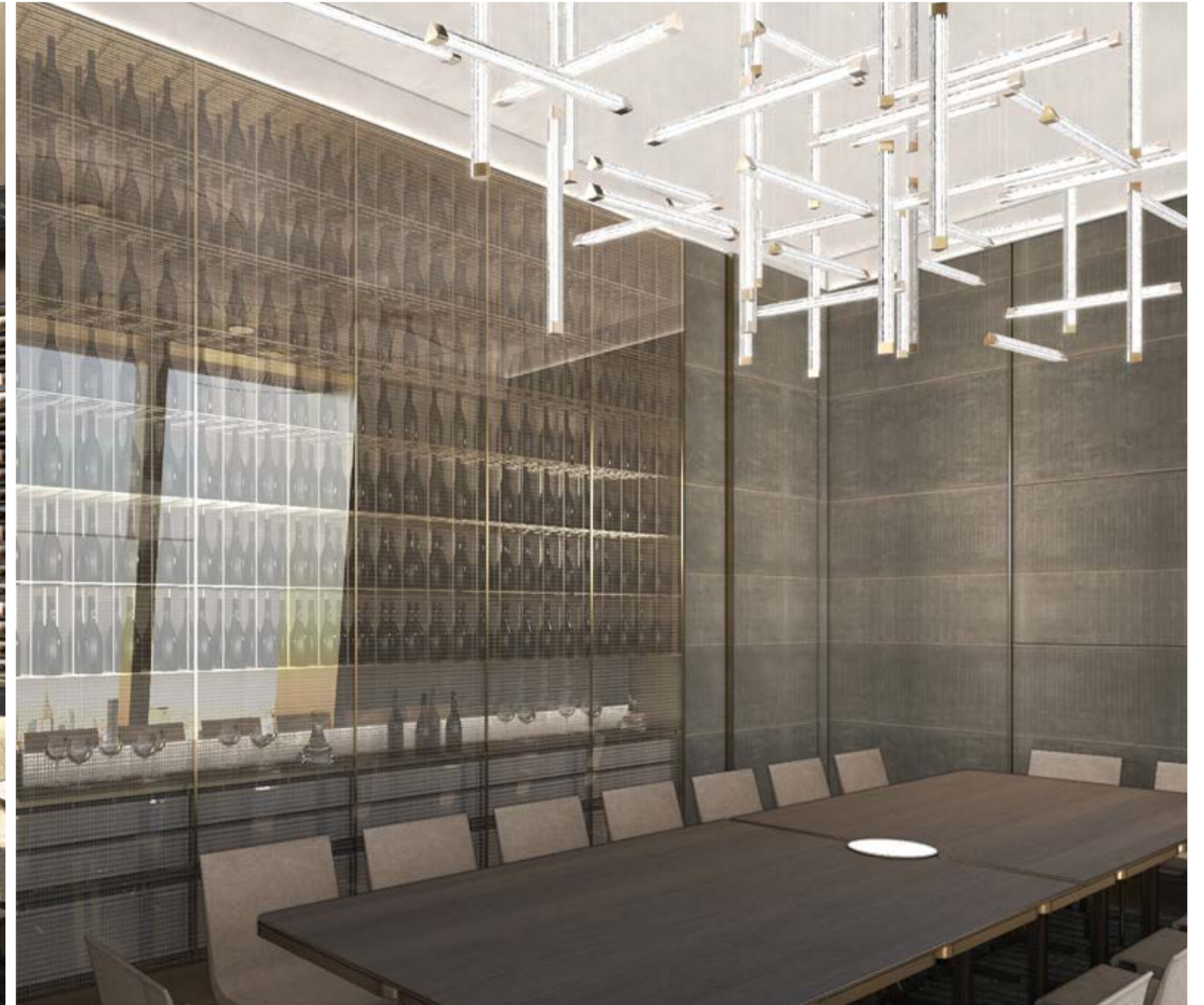
PROGRESS PHOTOS



GUESTS ARRIVE AT LEVEL 101 TO OPEN-SKY VIEWS. THIS LANDING SERVES THE RESTAURANT, EVENT SPACE, AND CONNECTS TO A MONUMENTAL STAIR LEADING TO THE OBSERVATION DECK LEVEL BELOW.

BRONZE INLAYS AND A RHYTHM OF WALL SCONCES ARE CARRIED UP FROM THE LOWER LOUNGE, CREATING A SEAMLESS EXPERIENCE THAT KEEPS RESTAURANT GUESTS ON-PATH.

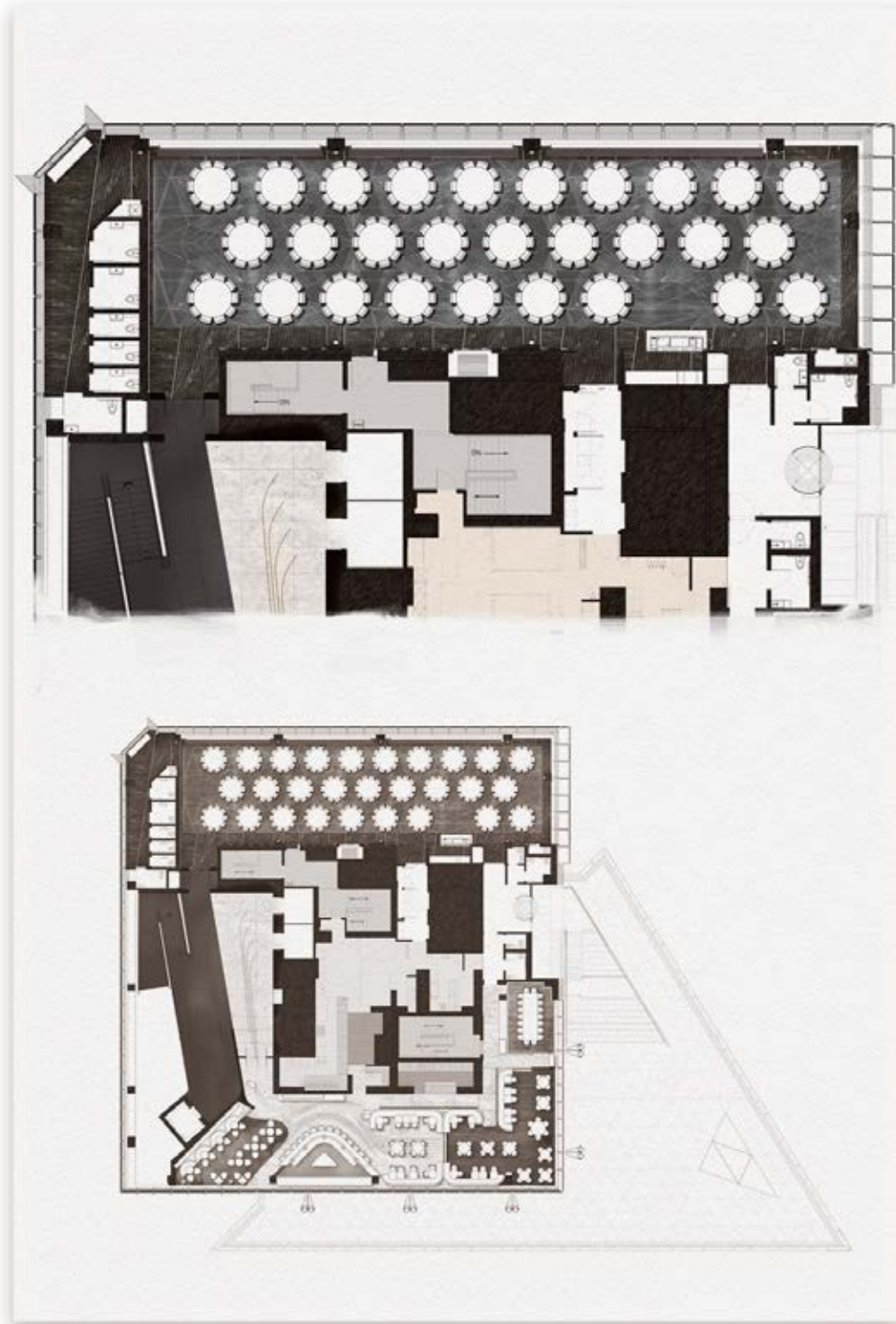




PEAK RESTAURANT IS A SERIES OF FOUR ZONES : A SMALL COCKTAIL LOUNGE, A 14 PERSON HORSE-SHOE BAR, A TIERED DINING ROOM THAT OFFERS DEMOCRATIC ACCESS TO THE VIEW, AND A MULTI-FUNCTIONAL PRIVATE DINING ROOM.

EACH SPACE FEATURES DETAILS WORTHY OF CLOSER INSPECTION INCLUDING HAND-STITCHED, EMBOSSED LEATHER WALL PANELS, CUSTOM CAST-LIGHTING INSTALLATIONS, AND CUSTOM-DESIGNED WINE AND LIQUOR DISPLAYS TO HOUSE THE CLIENTS' COLLECTION.

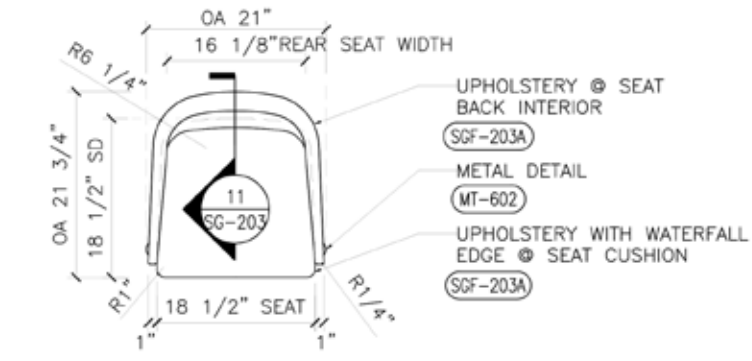




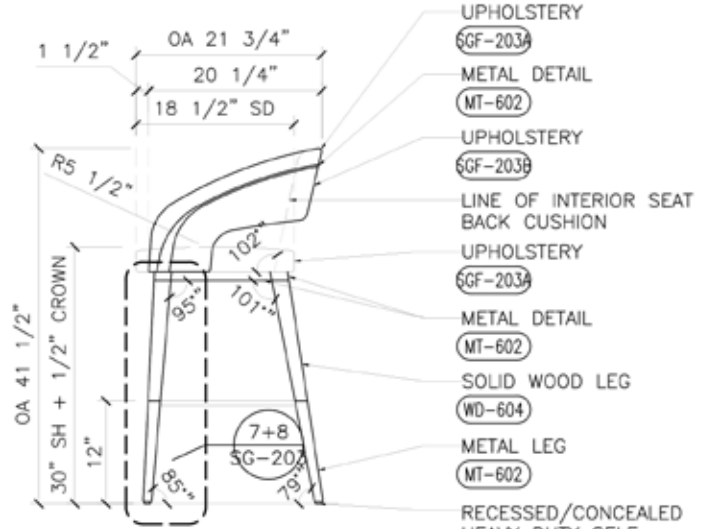
PEAK ALSO REQUIRED A MULTI-FUNCTION EVENT SPACE THAT COULD TRANSITION FROM CORPORATE PRESENTATION TO ULTIMATE SOCIETY EVENT. A SERIES OF UP-LIT CONICAL VAULTS MARCH DOWN THE SPACE. THE VAULTS ALSO TRANSLATE INTO A FLOOR SEAMING PATTERN OF VARIED SCALE AND ORIENTATION. A SERIES OF PORTALS, BREAK DOWN THE SCALE OF THE ROOM, WHICH CAN SEAT UP TO 300.



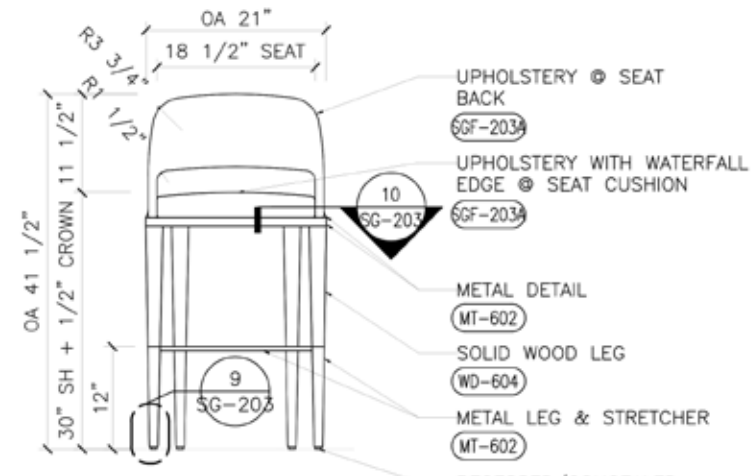
ANGLED CUTS MANIFEST IN MULTIPLE INTERPRETATIONS. PORTALS FRAME THE CANTING FACADE. WALL PANELS ARE SEPARATED BY GENEROUS NICKEL-BRASS BEADING, AND THE LINEAR VENEER IS ANGLED TO REINFORCE THE GEOMETRY. COLUMNS FEATURE INTEGRAL SCONCES OF ANGLED METAL PLATES. BRAZILIAN GRANITE PLANES FORM THE BAR DIE.



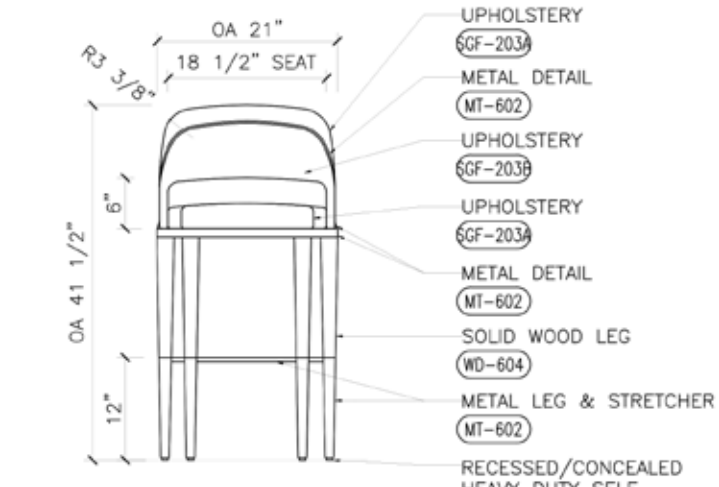
1 PLAN
SG-203 SCALE: 3/4" = 1'-0"



2 SIDE ELEVATION
SG-203 SCALE: 3/4" = 1'-0"



3 FRONT ELEVATION
SG-203 SCALE: 3/4" = 1'-0"



4 BACK ELEVATION
SG-203 SCALE: 3/4" = 1'-0"

GENERAL NOTES:

1. Refer to Rockwell Group FF&E and Architectural Preamble for product guidelines including but not limited to sourcing, purchasing, producing and install.
2. Manufacturer to provide shop drawings and finish samples for RG approval prior to production
3. Must be contract quality and suitable for commercial installation to withstand high traffic use, site conditions, humidity and weather conditions typical for the local and type of use.
4. Verify overall dimensions prior production.
5. Manufacturer to verify in field all measurements and site conditions. All quantities are to be verified by the purchasing agent and/or the contractor, including attic stock.
6. Must pass all codes required for contract installation including but not limited to local fire codes, health inspections and ADA.
7. Confirm furniture item can be placed on site prior production.

MATERIAL INDEX

MT-602	SPECIALTY BRASS FINISH TO MATCH ARCHITECT'S CONTROL.
SGF-203A	UPHOLSTERY FABRIC @ CUSTOM BARSTOOL
SGF-203B	UPHOLSTERY LEATHER @ CUSTOM BARSTOOL
WD-604	FIGURED FLAT SAWN WALNUT STAINED TO MATCH ARCHITECT'S CONTROL.

TITLE: SG-203, QTY: TBD
Scale: VARIED, REFER TO DWG
DRAWING ISSUE RECORD
STATUS: DATE ISSUED (owner) (contractor) (mechanical) (electrical) (light) (field) (other)

Rockwell Architecture, Planning and Design, P.C.
5 Union Square West
New York, NY 10003
Tel 212-661-6834

© Rockwell Architecture, Planning and Design, P.C. 2017

PROJECT:
**HUDSON YARDS
OBSERVATION DECK**
New York, NY

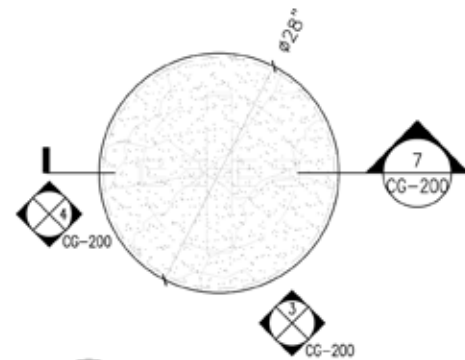
SKETCH No.
SG-203
PAGE 1 OF 4

rockwellgroup

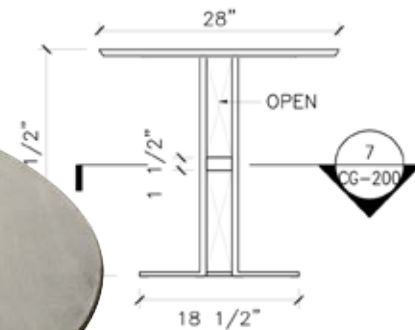
**PEAK RESTAURANT
CUSTOM FFE DESIGN**

PEAK RESTAURANT FEATURES A LARGE AMOUNT OF CUSTOM FURNITURE DESIGNED TO SIT SEAMLESSLY IN THE SURROUNDING ARCHITECTURE. GRACEFUL FLOOR INLAYS TRANSLATE INTO A METAL DETAIL SEPARATING UPHOLSTERIES ON A BARSTOOL.

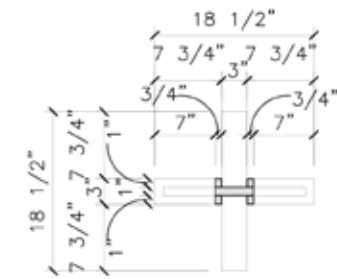
DETAILED DRAWINGS WERE PRODUCED, FOLLOWED BY A THOROUGH SHOP DRAWING REVIEW PROCESS. IMAGES SHOWN OF ACTUAL PROTOTYPES AND SELECT PORTIONS OF ORIGINAL DRAWINGS.



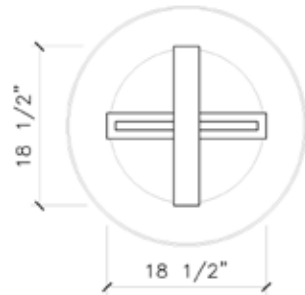
1 PLAN
SCALE: 3/4" = 1'-0"



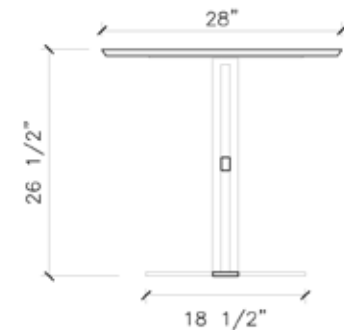
3 FRONT VIEW
SCALE: 3/4" = 1'-0"



7 SECTION PLAN
SCALE: 3/4" = 1'-0"



2 BOTTOM VIEW
SCALE: 3/4" = 1'-0"



4 SIDE VIEW
SCALE: 3/4" = 1'-0"



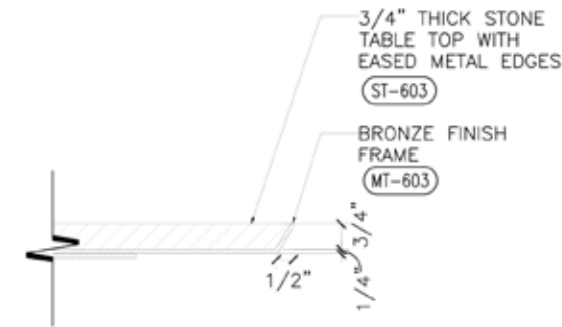
6 REFERENCE IMAGE
SCALE: N.T.S.

MATERIAL INDEX

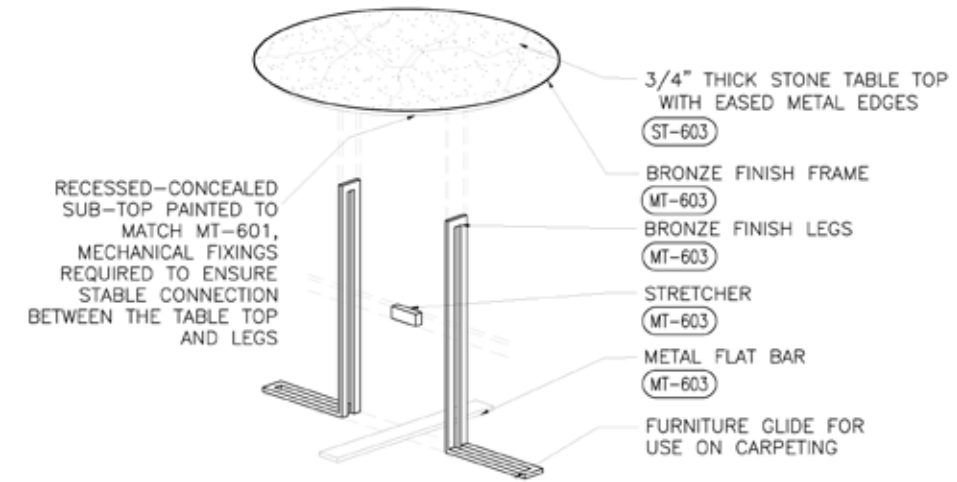
MT-603	SPECIALTY FINISH ON STEEL TO MATCH ARCHITECT'S CONTROL
ST-603	BLUE DE SAVOIE, DARK HONED SLAB, SLAB SELECTION TO BE APPROVED BY RG, TEMPLATE OF STONE TOP ON SLAB TO BE SUBMITTED FOR APPROVAL

GENERAL NOTES:

1. Refer to Rockwell Group FF&E and Architectural Preamble for product guidelines including but not limited to sourcing, purchasing, producing and install.
2. Manufacturer to provide shop drawings and finish samples for RG approval prior to production
3. Must be contract quality and suitable for commercial installation to withstand high traffic use, site conditions, humidity and weather conditions typical for the local and type of use.
4. Verify overall dimensions prior production.
5. Manufacturer to verify in field all measurements and site conditions. All quantities are to be verified by the purchasing agent and/or the contractor, including attic stock.
6. Must pass all codes required for contract installation including but not limited to local fire codes, health inspections and ADA.
7. Confirm furniture item can be placed on site prior production.



5 SECTION DETAIL
SCALE: 3" = 1'-0"



8 EXPLODED AXO
SCALE: N.T.S.

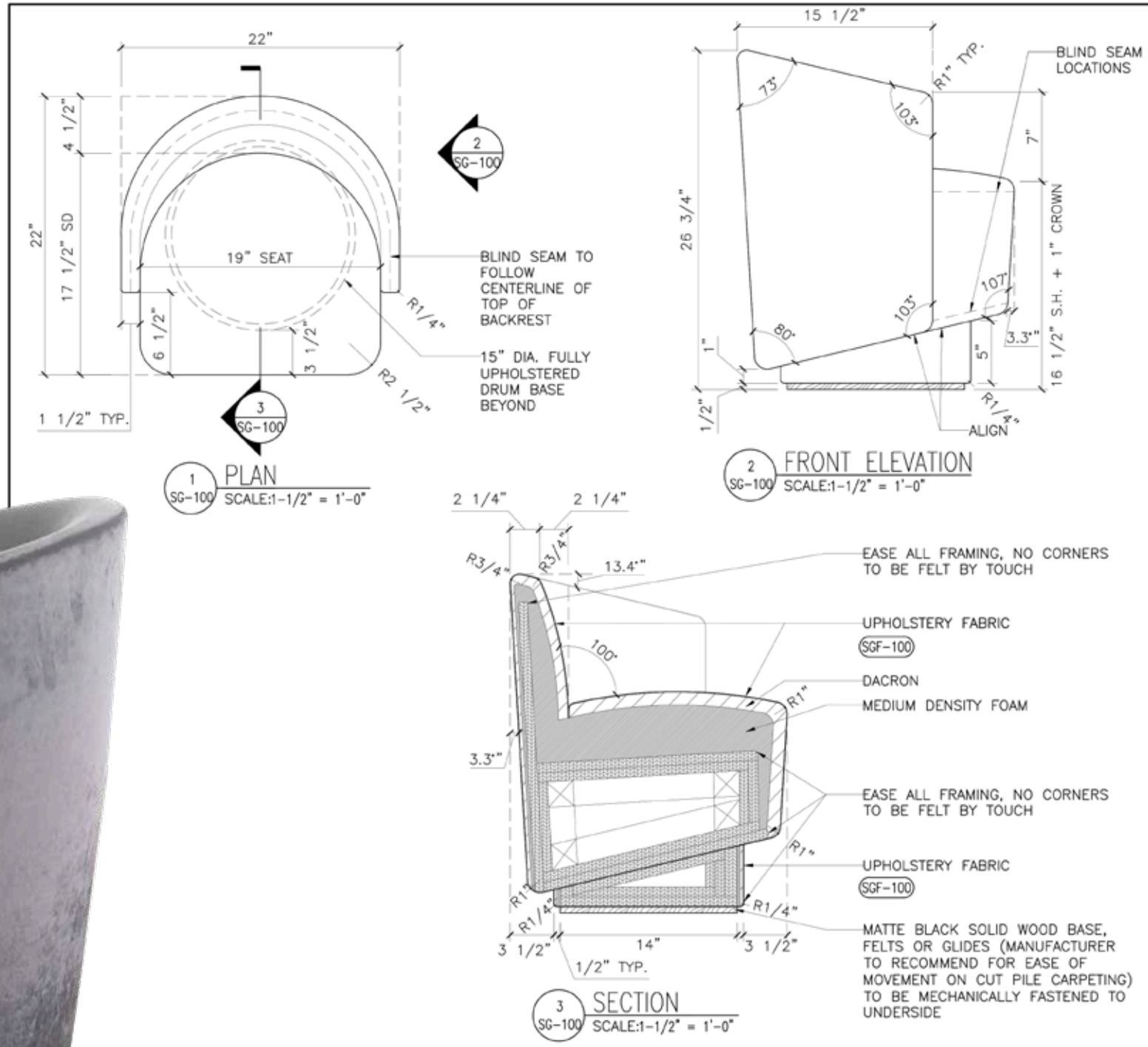
TITLE: CG-200, QTY: 4	ALL DRAWINGS SHOWN IN INCHES UNLESS OTHERWISE NOTED.
Scale: VARIOUS, REFER TO DWG	Checked by: GA
DRAWING ISSUE RECORD	Drawn by: AA
STATUS	DATE ISSUED
	owner
	arch
	mech
	elec
	light
	field
	other

Rockwell Architecture, Planning and Design, P.C.
5 Union Square West
New York, NY 10003
Tel 212-661-0334

All legal rights including but not limited to, copyright and design patents, are reserved by Rockwell Architecture, Planning and Design, P.C. and its affiliates. No part of this document may be reproduced, stored in a retrieval system, or transmitted in any form or by any means, electronic, mechanical, photocopying, recording, or by any information storage and retrieval system, without the prior written permission of Rockwell Architecture, Planning and Design, P.C. Written permission shall be obtained from Rockwell Architecture, Planning and Design, P.C. before any part of this document may be reproduced, stored in a retrieval system, or transmitted in any form or by any means, electronic, mechanical, photocopying, recording, or by any information storage and retrieval system, without the prior written permission of Rockwell Architecture, Planning and Design, P.C. All drawings and specifications are subject to change without notice. Rockwell Architecture, Planning and Design, P.C. shall not be held responsible for any errors or omissions in this document. © Rockwell Architecture, Planning and Design, P.C. 2017

PROJECT:
HUDSON YARDS
OBSERVATION DECK
New York, NY
SKETCH No.
CG-200

rockwellgroup



GENERAL NOTES:

1. Refer to Rockwell Group FF&E and Architectural Preamble for product guidelines including but not limited to sourcing, purchasing, producing and install.
2. Manufacturer to provide shop drawings and finish samples for RG approval prior to production
3. Must be contract quality and suitable for commercial installation to withstand high traffic use, site conditions, humidity and weather conditions typical for the local and type of use.
4. Verify overall dimensions prior production.
5. Manufacturer to verify in field all measurements and site conditions. All quantities are to be verified by the purchasing agent and/or the contractor, including attic stock.
6. Must pass all codes required for contract installation including but not limited to local fire codes, health inspections and ADA.
7. Confirm furniture item can be placed on site prior production.

MATERIAL INDEX

SGF-100	UPHOLSTERY FABRIC PER ROCKWELL GROUP SPECIFICATION
RECESSED BASE PLATE	MATTE BLACK PAINTED WOOD

TITLE: SG-100 QTY: TBD ALL DIMENSIONS SHOWN IN INCHES UNLESS OTHERWISE NOTED.
 Scale: Varies, Refer to DWG Checked by: GA
 Drawn by: GA
 DRAWING ISSUE RECORD

STATUS	DATE ISSUED	OWNER	FIG	USE	STRUCT	Mech	Plumb	elec	light	field	other

Rockwell Architecture, Planning and Design, P.C.
 5 Union Square West
 New York, New York 10003
 Tel 212-460-0534

All legal rights including but not limited to, copyright and design patent rights in the design, arrangement and construction of the furniture, including but not limited to, the overall form, proportions, details, materials, finishes, and construction methods, are reserved by Rockwell Architecture, Planning and Design, P.C. and will be used or licensed in whole or in part, without the written consent of Rockwell Architecture, Planning and Design, P.C. No part of this document may be reproduced, stored in a retrieval system, or transmitted in any form or by any means, electronic, mechanical, photocopying, recording, or by any information storage and retrieval system, without the prior written permission of Rockwell Architecture, Planning and Design, P.C. All dimensions and specifications are the responsibility of the manufacturer and contractor. The manufacturer and contractor shall be responsible for all dimensions and specifications on this drawing. All dimensions and specifications are subject to change without notice. All dimensions and specifications are subject to change without notice. All dimensions and specifications are subject to change without notice.

© Inset Architecture, Planning and Design, P.C. 2018

PROJECT:
 HUDSON YARDS
 OBSERVATION DECK
 New York, NY

SKETCH No.:
 SG-100





NEW YORK
edge



rockwellgroup

RELATED

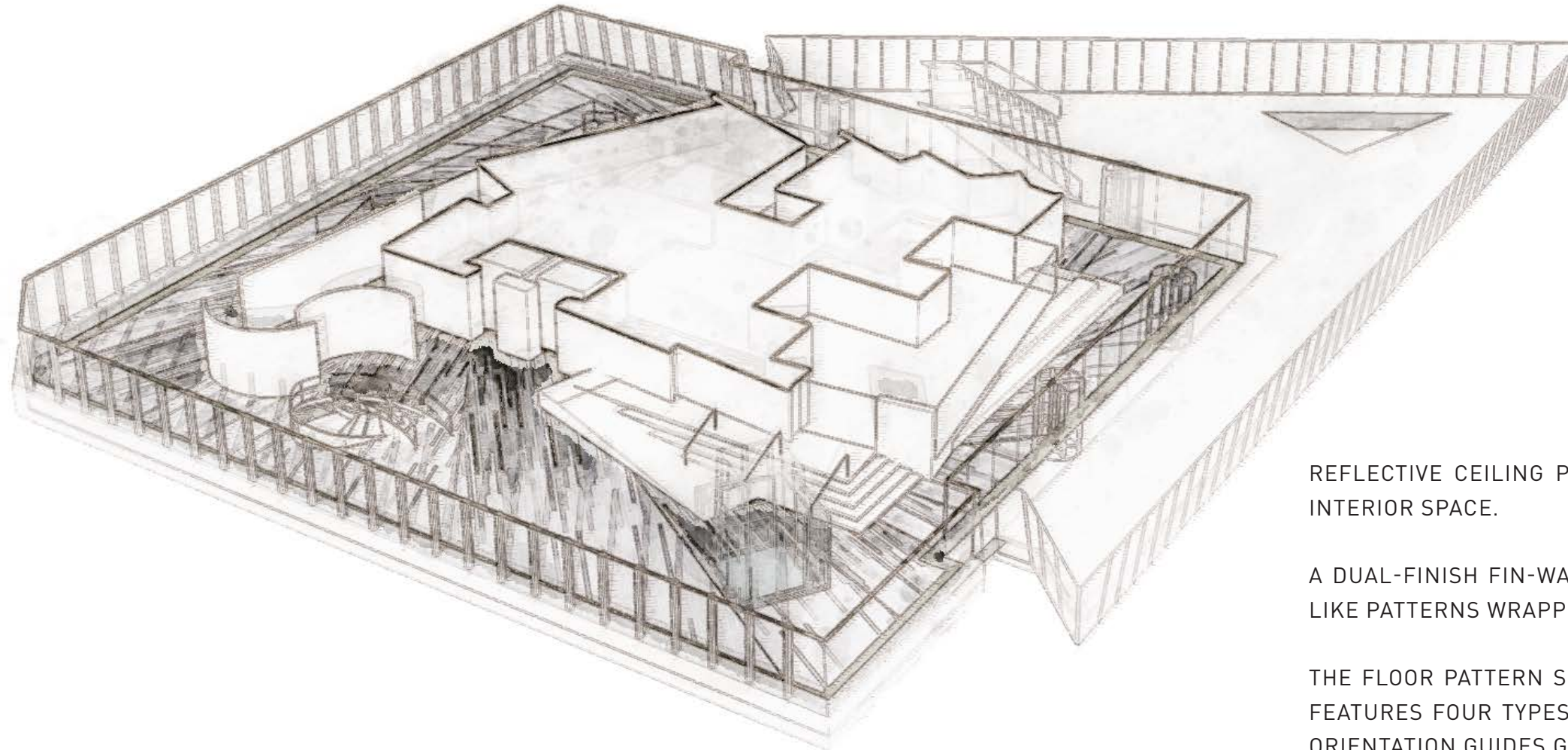
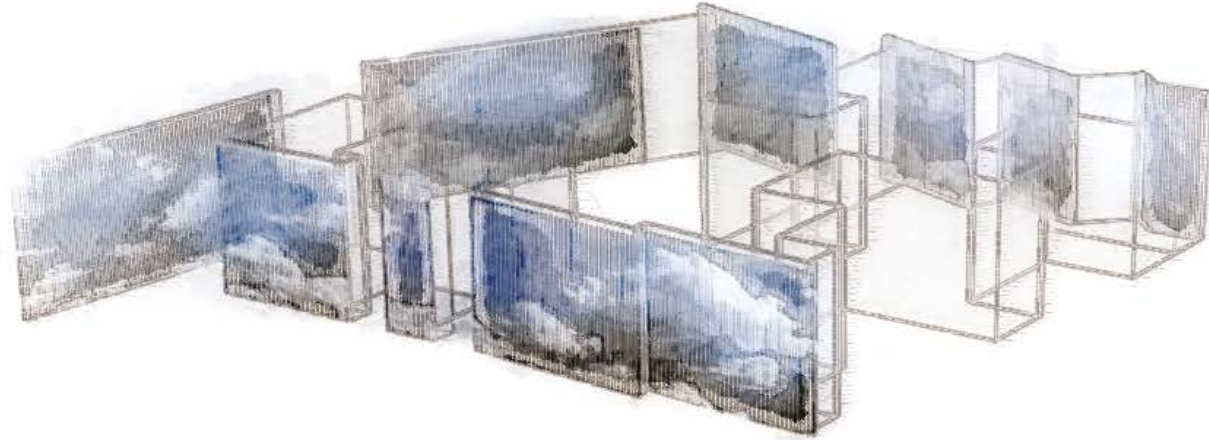
edge

NEW YORK

ROLE : LEAD INTERIOR DESIGNER
FIRM : ROCKWELL GROUP

PHASES : CONCEPT THROUGH CONSTRUCTION
STATUS : IN CONSTRUCTION

EDGE, THE OBSERVATION DECK AT HUDSON YARDS, PRESENTED A UNIQUE DESIGN CHALLENGE. THE CLIENT WANTED TO CELEBRATE EDGE AS A MICROCOSMIC PREVIEW INTO CITIES OF THE FUTURE. SIMULTANEOUSLY, ALL MAJOR DESIGN-MOVES NEEDED TO REINFORCE RATHER THAN DISTRACT FROM THE SPECTACULAR VIEWS.



REFLECTIVE CEILING PANELS DOUBLE VIEWS AND BRING THE CITY INTO THE INTERIOR SPACE.

A DUAL-FINISH FIN-WALL SYSTEM HAS SUBTRACTIVE CUTS THAT FORM CLOUD LIKE PATTERNS WRAPPING THE CORE.

THE FLOOR PATTERN SUGGESTS LIGHT STREAMING IN FROM THE WINDOWS; IT FEATURES FOUR TYPES OF MARBLE CUT INTO ANGLED STONE PLANKS. THEIR ORIENTATION GUIDES GUESTS AROUND THE FLOOR.

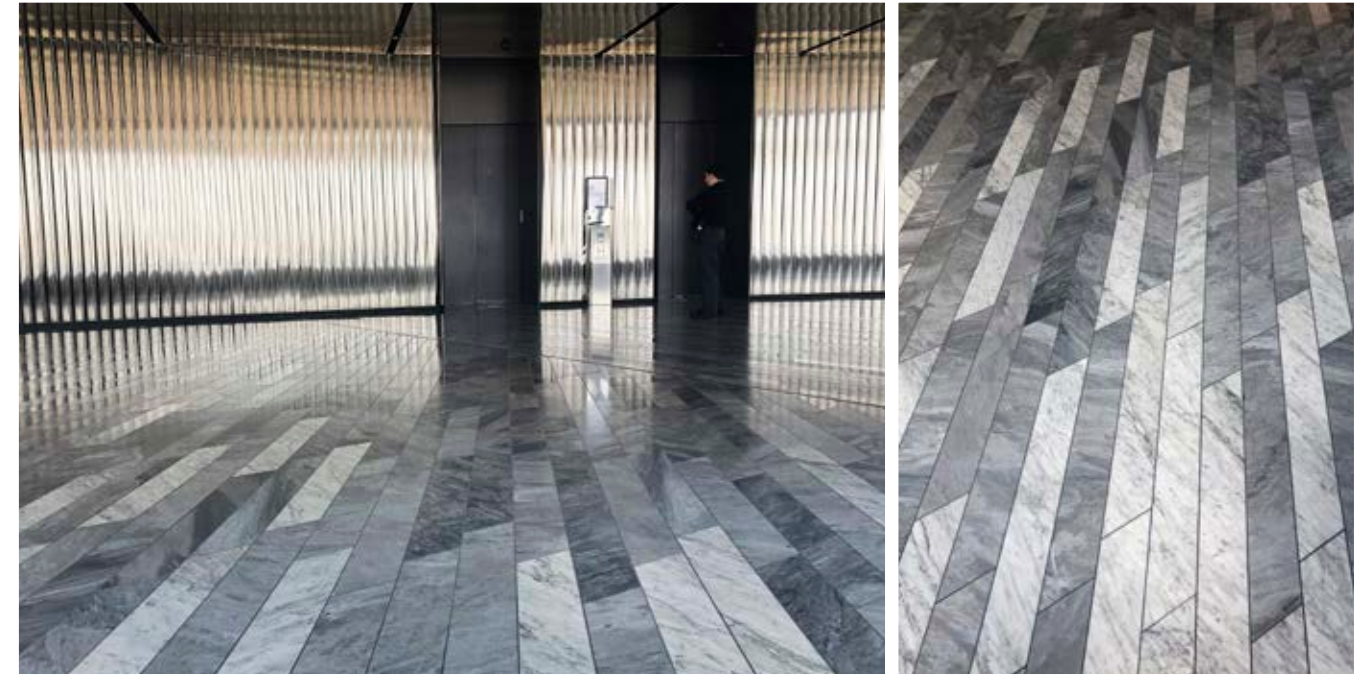
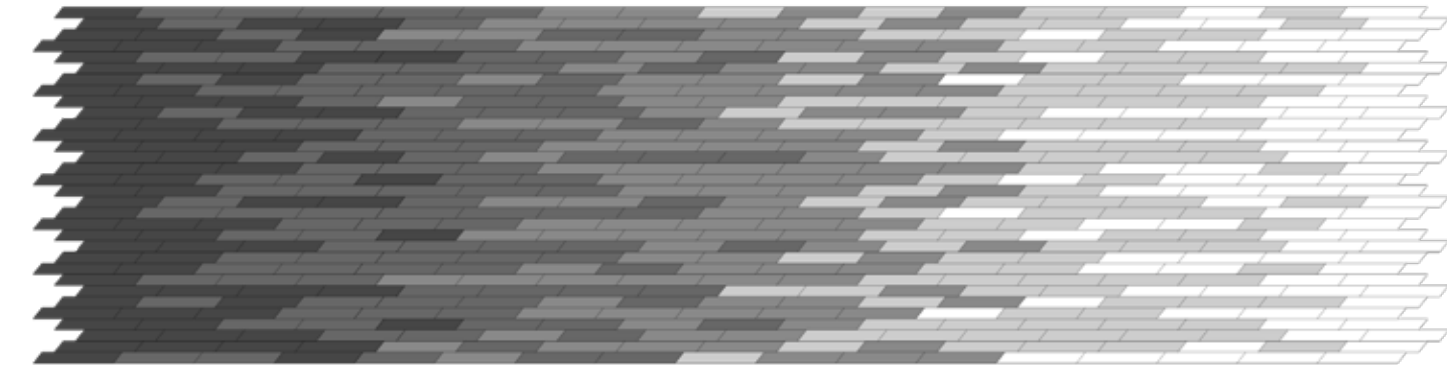
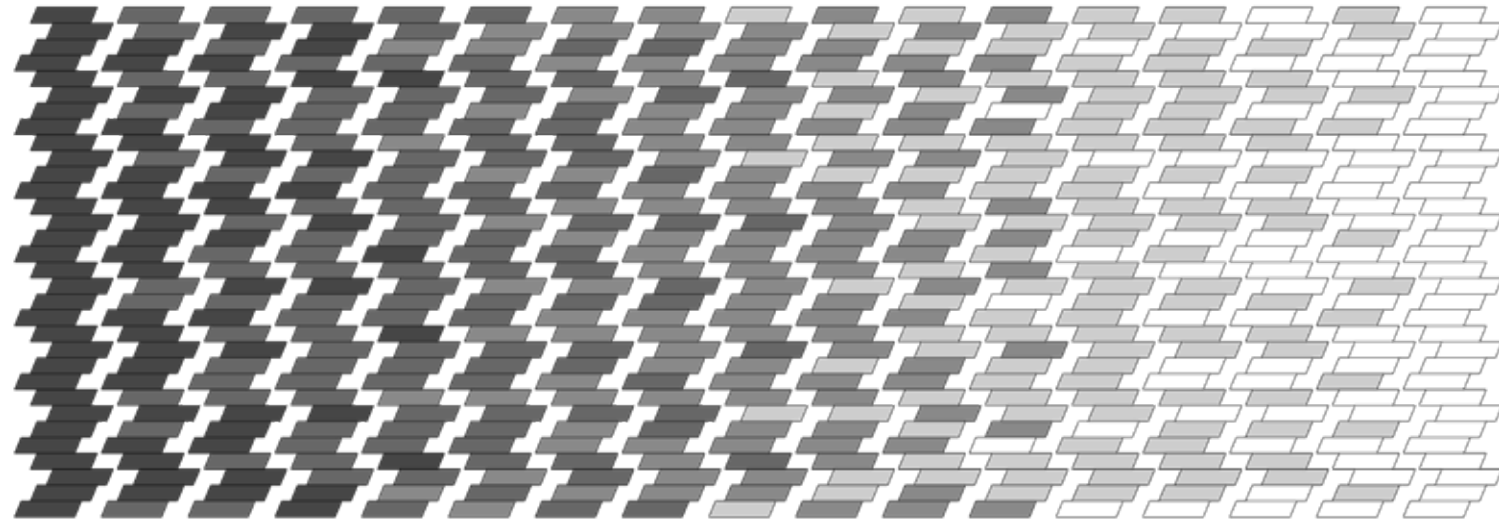
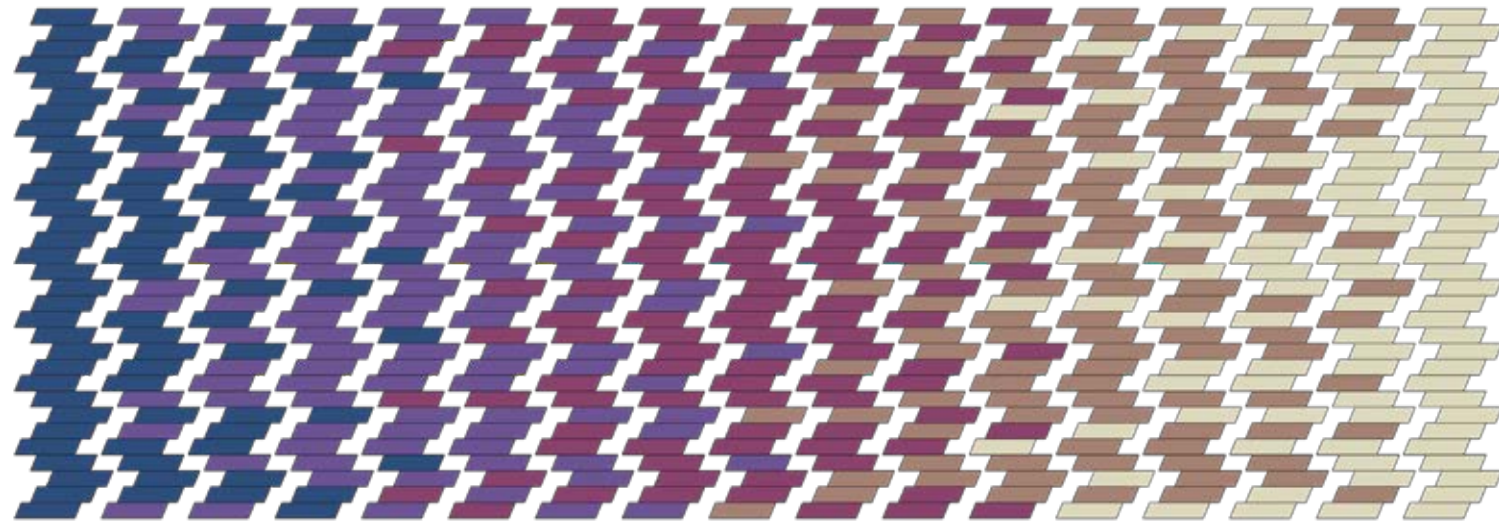




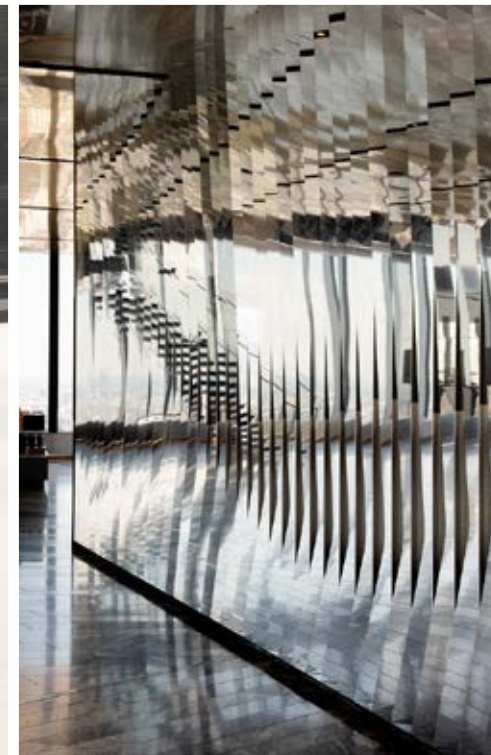


THE CLIENT'S BRIEF REQUESTED A UNIQUE SPECTACLE. ROCKWELL GROUP PROPOSED SCALING UP THE SIDE OF THE BUILDING AS AN URBAN EXPERIENCE THAT CELEBRATED THE UNIQUE POSITIONING.

A "SUIT-UP" ROOM ALLOWS OBSERVATION DECK GUESTS TO BECOME VOYEURS OF THE DARING. EXPANDED METAL MESH WALLS AND CEILING SPEAK TO THE INDUSTRIAL SPACES THAT THE CLIMBERS WILL ENCOUNTER ON THEIR JOURNEY TO THE TOP.



EMULATING THE SUNS RAYS, THE STONE FLOOR CREATES AN OMBRE OF NATURAL MATERIAL. THIS PRESENTED MULTIPLE CHALLENGES, FROM EXPLAINING THE FEASIBILITY TO THE CLIENT, CRAFTING A SCALED MOCK-UP FOR PROOF OF CONCEPT, SOURCING A LARGE QUANTITY OF STONE WITHIN LIMITED RANGE CONSTRAINTS, AND FINALLY DRY-LAYING EVERY SINGLE TILE FOR REVIEW.



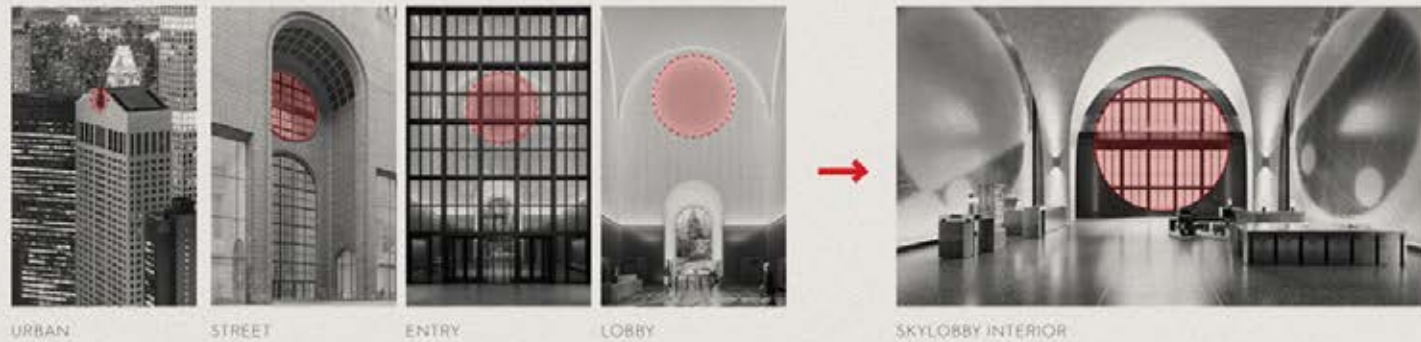


550

MADISON



NOVEMBER 25, 2019 | 100% DD



URBAN STREET ENTRY LOBBY SKYLOBBY INTERIOR

A SEQUENCE OF MOMENTS WITH A FRAMED OCULUS

550 MADISON

ROLE : LEAD INTERIOR DESIGNER
FIRM : ROCKWELL GROUP

PHASES : CONCEPT THROUGH DD
STATUS : IN DESIGN DEVELOPMENT

DESIGNING AMENITY'S TO LIVE UP TO THE REPUTATION OF PHILIP JOHNSON'S 550 MADISON, A POST-MODERN ICON, CAME WITH INTIMIDATIONS AND SENSITIVITIES. SOCIAL PROGRAMS HAD TO MATCH THE PRESTIGE OF THE BUILDING, AND THE CLIENT DESIRED A HOSPITALITY FOCUSED PERSPECTIVE. STANDARD BUSINESS AMENITIES WOULD NOT DO.

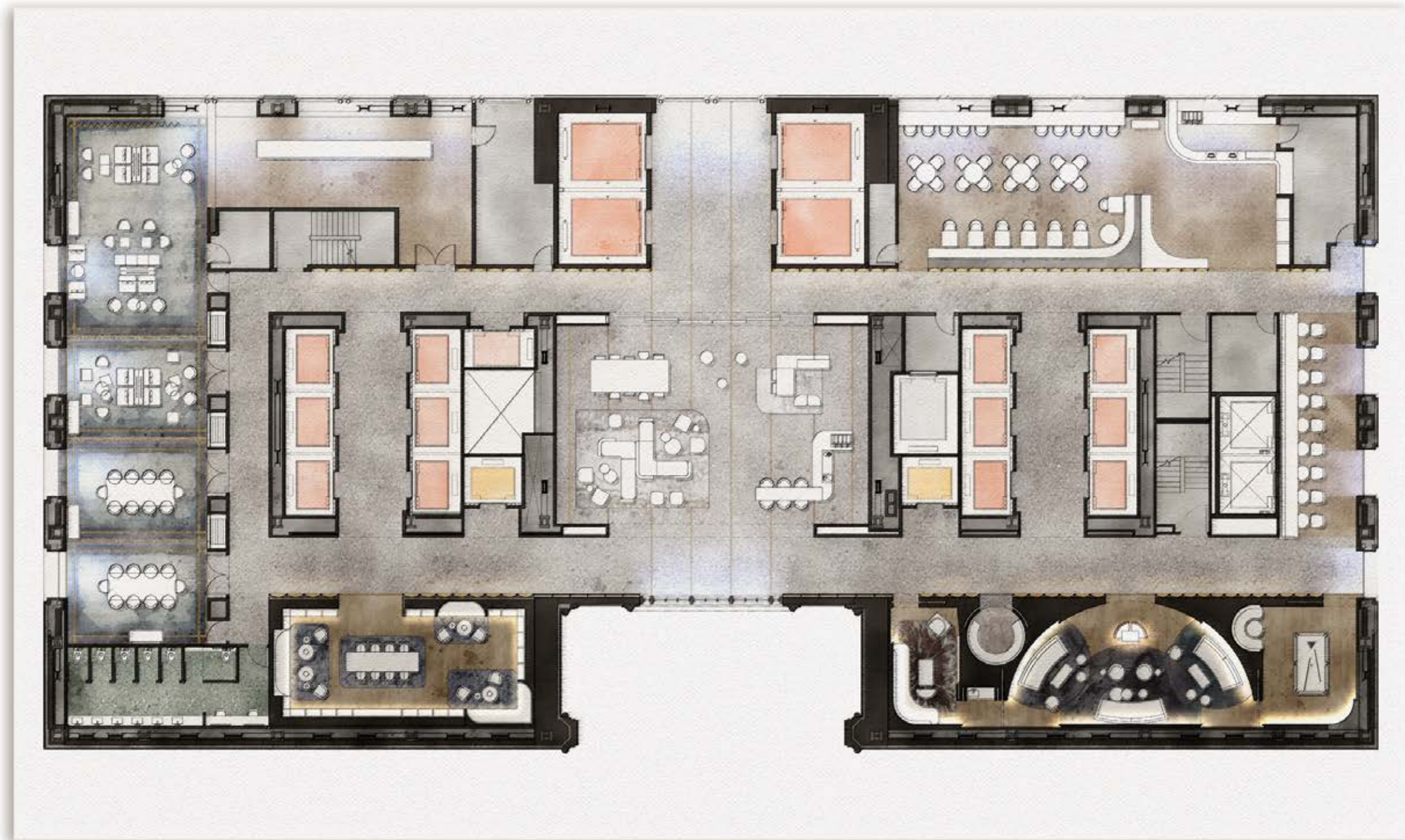
ROCKWELL GROUP DREW INSPIRATION FROM THE CELEBRATION OF THE OCULUS AT ALL SCALES : FROM THE "CHIPPENDALE BOOKCASE" CROWN, TO THE ICONIC ROSE WINDOW OF THE AMENITY LEVEL.



RETENTION OF THE MONUMENTAL MURALS, A SITE SPECIFIC COMMISSION FROM FAMED ARTIST DOROTHEA ROCKBURNE, WAS A CLIENT NON-NEGOTIABLE.



SHUTTLE ELEVATORS FROM THE LOBBY BRING ALL GUESTS TO CLUB LEVEL ONE. THE ROSE WINDOW GREETES YOU IN THE CENTRAL GRAND HALL, A SPACE THAT TRANSFORMS FROM DAY TO NIGHT. MORNING OFFERINGS INCLUDE A NEWSPAPER STAND AND ESPRESSO BAR. AS BUSINESS HOURS DRAW TO A CLOSE, A METAL MESH PANEL DESCENDS FROM THE UPPER LEVEL AND CREATES A GREATER SENSE OF PRIVACY. THE ESPRESSO COUNTER ROTATES AND BECOMES A WINE BAR, BAR CARTS ARE WHEELED INTO THE SPACE, AND SOFTER TOUCHES LIKE CANDLES AND PILLOWS SUGGEST WORK IS OVER.



ACCESS TO NATURAL LIGHT BECAME A PRIMARY CONSIDERATION IN PROGRAM PLANNING.

SUNLIGHT WAS RESERVED FOR ACTIVE PROGRAMS WITH GREATER SOCIALIZATION AND COLLABORATION :
A CASUAL GRAB-AND-GO RESTAURANT, A PRIVATE CHEFS TABLE, AND FLEXIBLE MEETING ROOMS.

ROOMS WITHOUT DAYLIGHT BECAME FOCUSED SPACES WITH A RESIDENTIAL FEEL: A LIBRARY, A SCREENING
ROOM, BILLIARDS, AND A HEARTH ROOM CENTERED BY A SCULPTURAL FIREPLACE.



MAD EATS





THE CELLAR LEVEL HOUSES A DEDICATED FITNESS CENTER. A LACK OF WINDOWS WAS VIEWED AS AN OPPORTUNITY; LIGHT BECAME A MATERIAL THAT COULD BE MANIPULATED AND CONTROLLED.





11
one eleven
MURRAY STREET



111

FISHER BROTHERS | rockwellgroup | WITKOFF

111

one eleven
MURRAY STREET

ROLE : PROJECT DESIGNER
FIRM : ROCKWELL GROUP

PHASES : SCHEMATIC THROUGH CONSTRUCTION
STATUS : COMPLETED

111 MURRAY, A LUXURY RESIDENTIAL CONDO BUILDING IN NYC'S TRIBECA, DRAWS INSPIRATION FROM ITS HISTORICAL AND PRESENT CONTEXT.

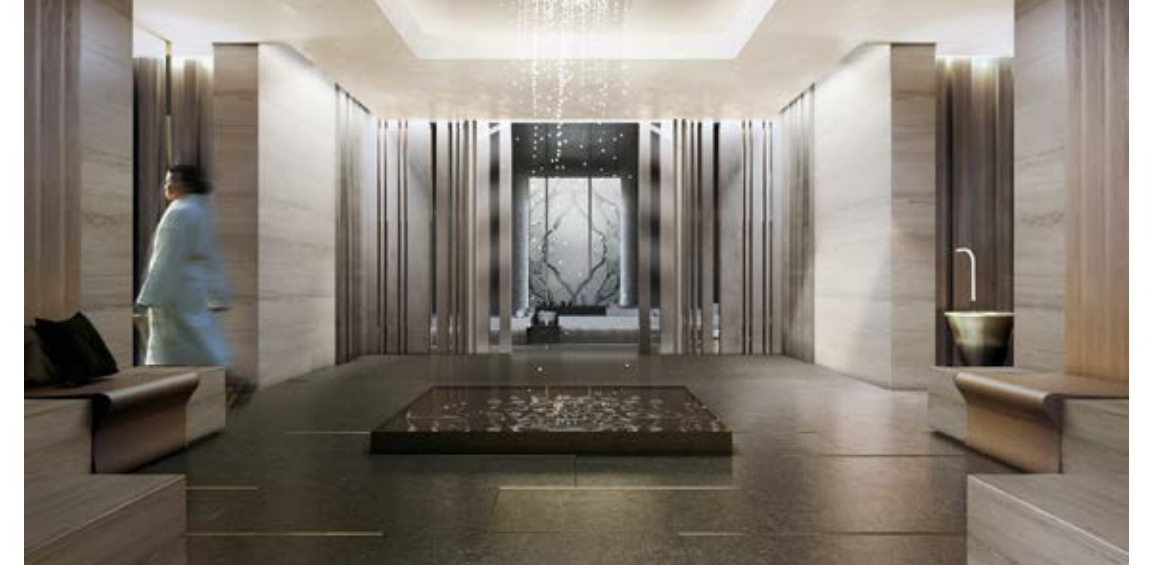
ONCE AN INDUSTRIAL BASE, TRIBECA LATER TRANSITIONED TO A COMMUNITY OF ARTISTS' LOFTS. TO CELEBRATE THIS RICH HISTORY, THE AMENITIES FEATURE HOT-ROLLED STEEL PANELS, AND CRAFT IS SHOWCASED IN THE CUSTOM FURNITURE BY LOCAL NYC ARTISTS.

WHILE MANY BUILDINGS ADVERTISE THEIR PARK ADJACENCY, 111 MURRAY SOUGHT TO CREATE A BUILDING WITHIN A PARK. SPACES ARE OUTWARDLY FOCUSED INTO A SERIES OF GARDENS, AND NATURAL, HONEST MATERIALS ARE HIGHLIGHTED THROUGHOUT.











NEMA



CRESCENT HEIGHTS®
INSPIRATIONAL LIVING

4 ORDER AND GRIDS

rockwellgroup

12
00
INDIANA

NEMA

ROLE : PROJECT DESIGNER
FIRM : ROCKWELL GROUP

PHASES : CONCEPT THROUGH CONSTRUCTION
STATUS : IN CONSTRUCTION

NATURAL ORDER, ARTIFICIAL ORDER, AND THE SURPRISING COMMONALITIES SERVED AS INSPIRATION FOR THE AMENITIES AT NEMA CHICAGO. GRID PATTERNS OF VARIED SCALES REFERENCE THE CITY'S URBAN PLANNING. SOFTER TOUCHES AND INTERIOR PLANTINGS BLUR THE BOUNDARIES WITH NEIGHBORING GRANT PARK.





HOUSE ^
G ^
NCES >



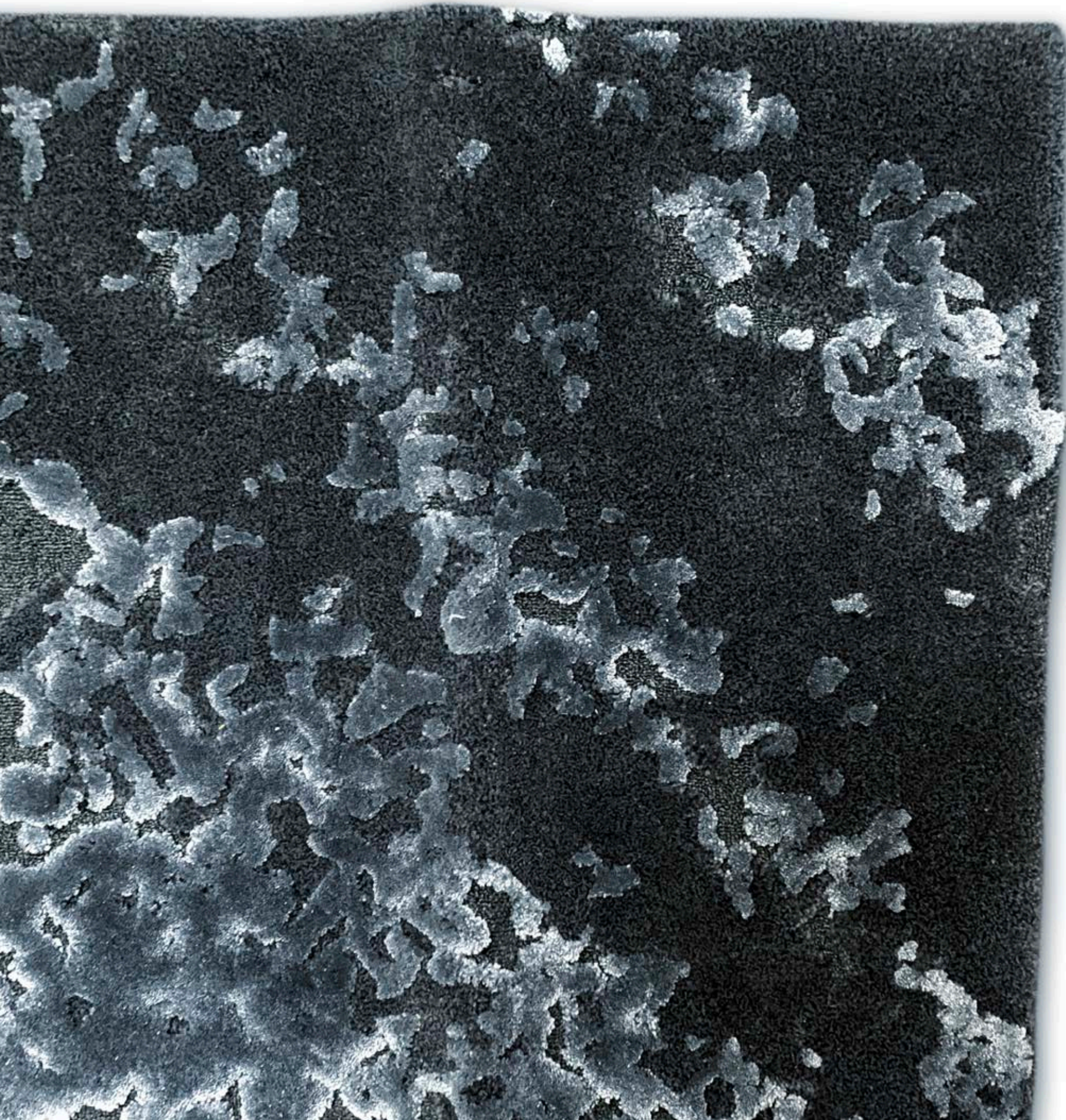
BASE KITCHEN DESIGN



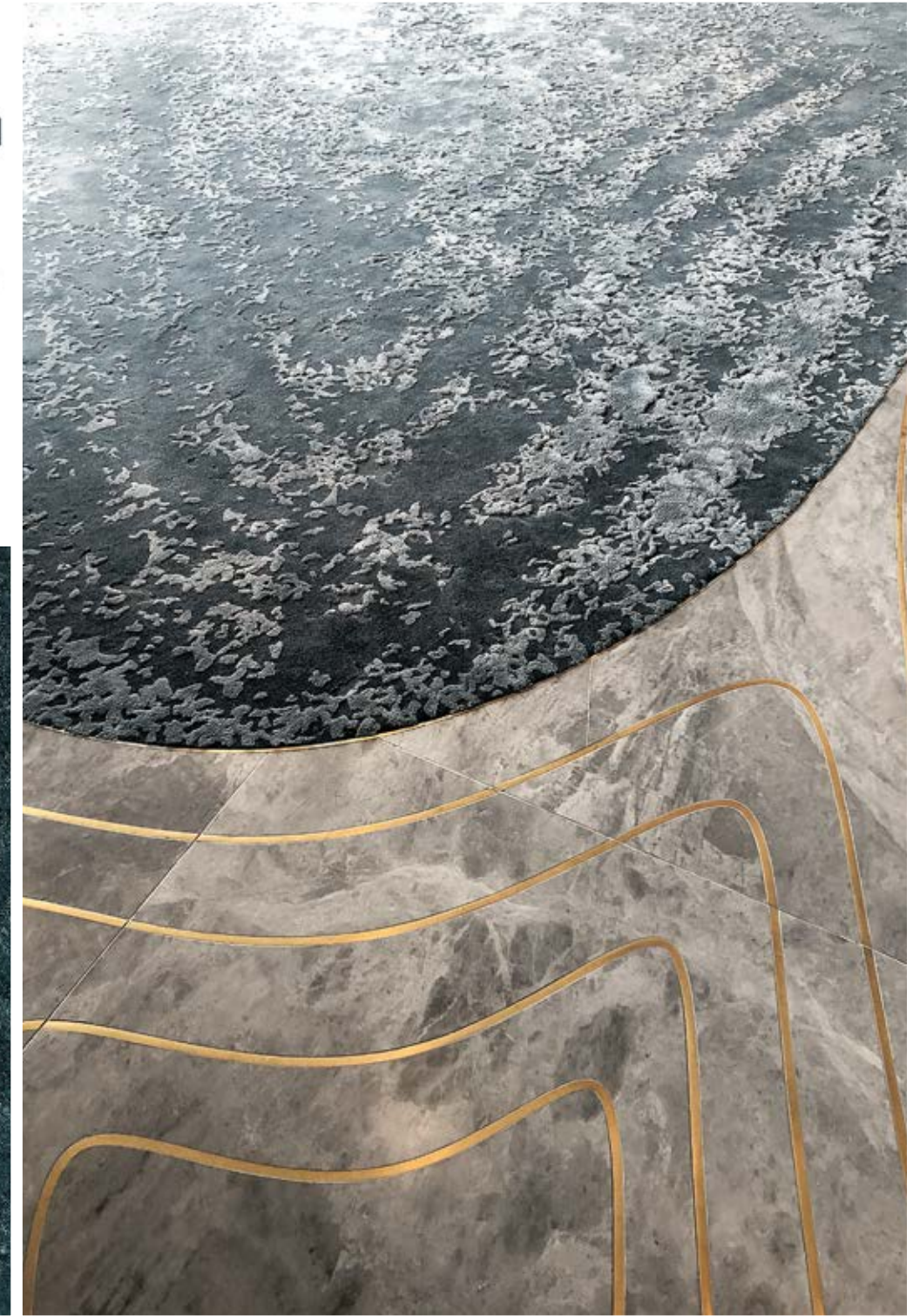
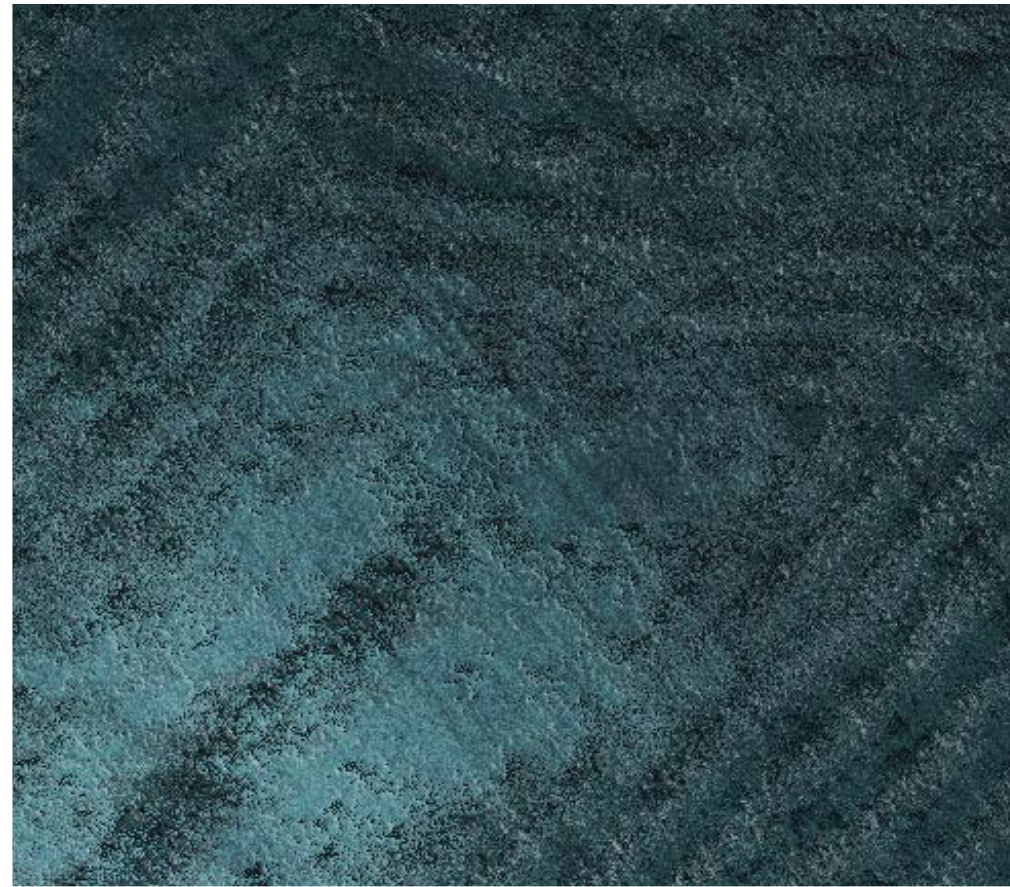
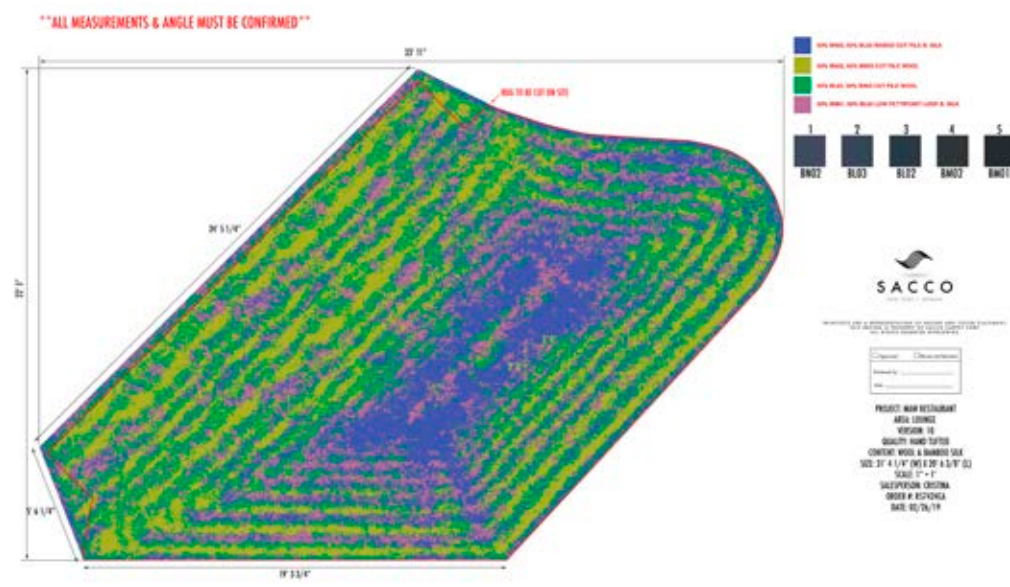
PREMIUM KITCHEN DESIGN



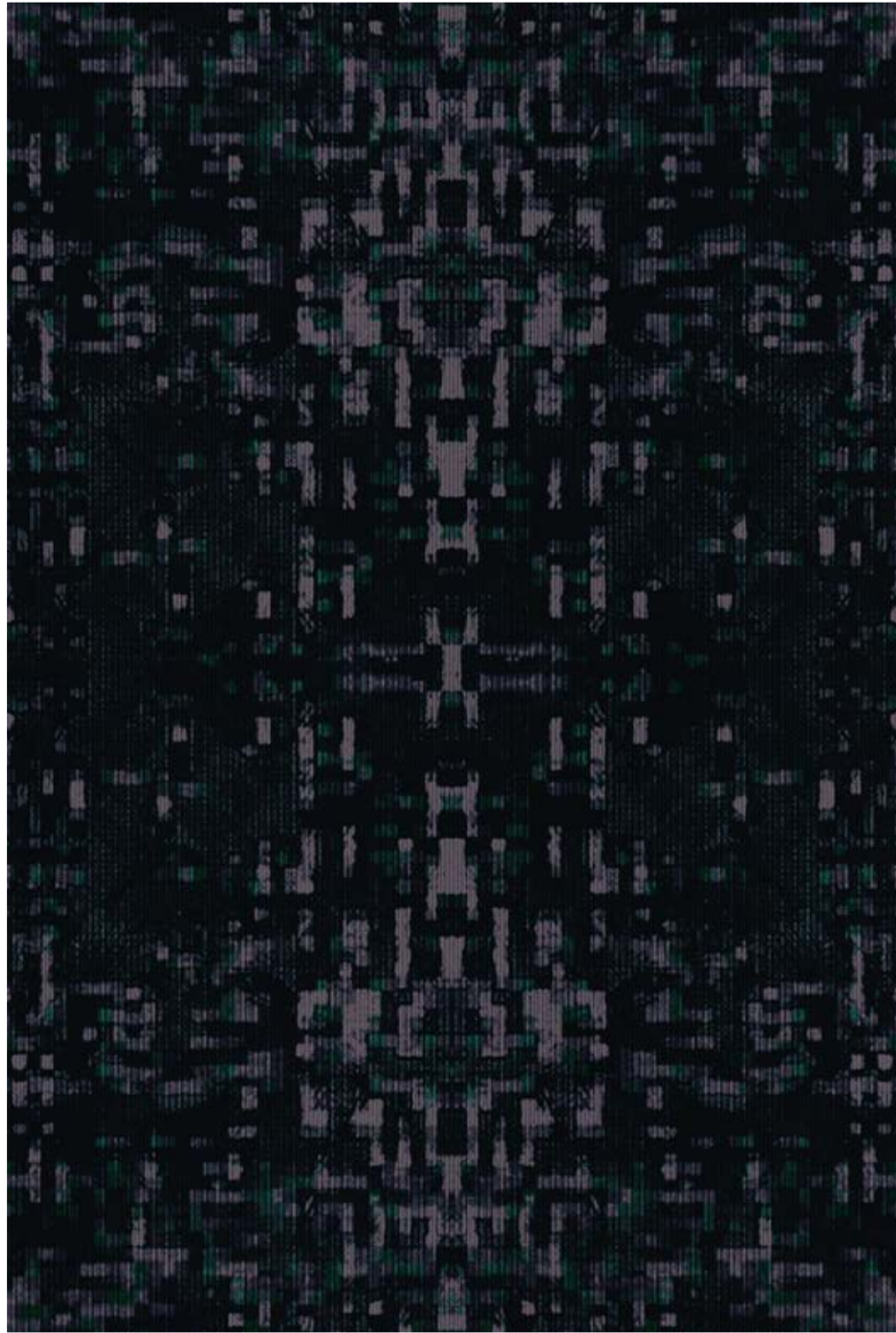
NEMA CHICAGO FEATURES BASE AND PREMIUM UNITS. ROCKWELL GROUP'S SCOPE INCLUDED KITCHEN AND BATH DESIGNS FOR EACH.



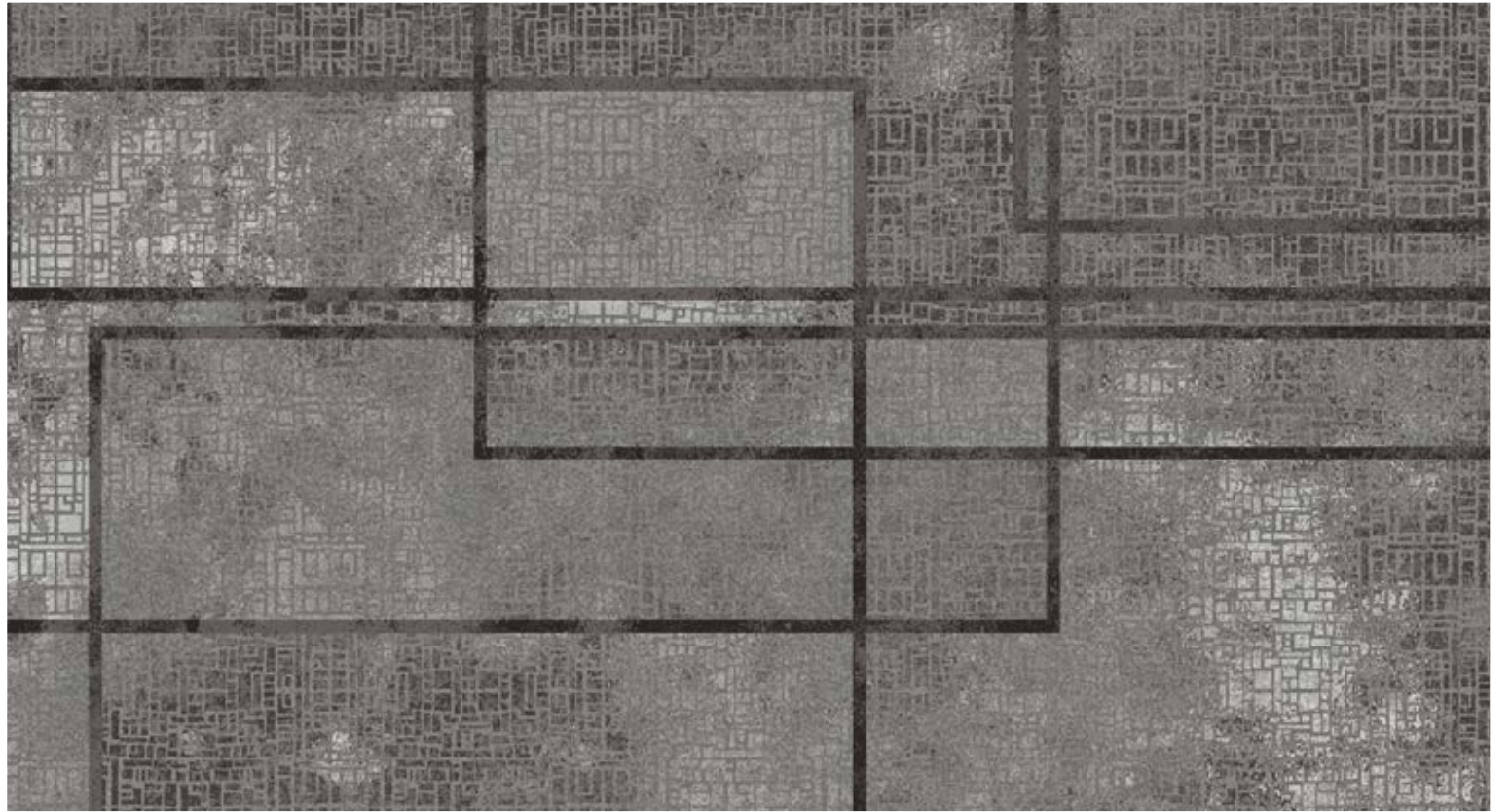
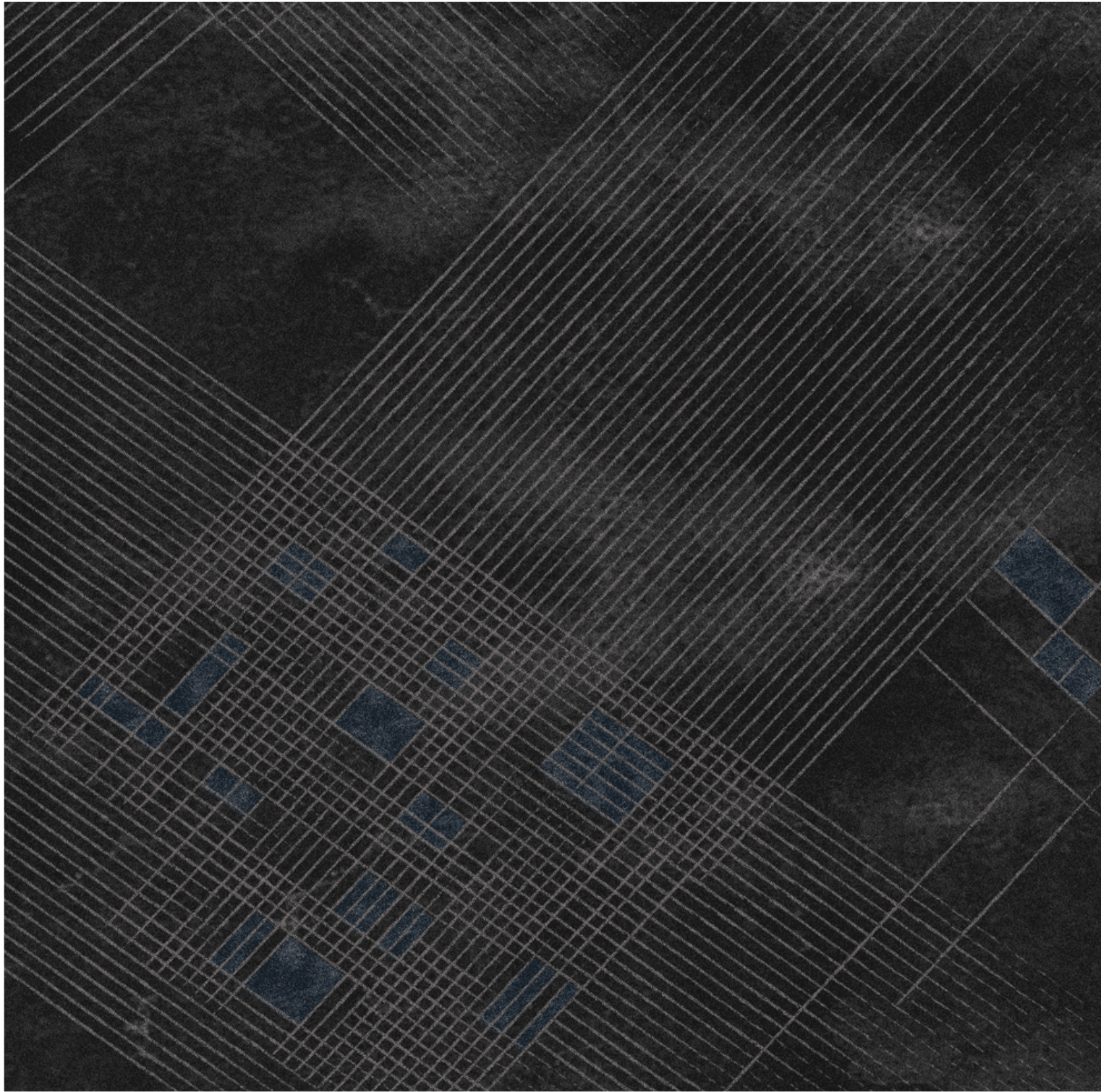
TEXTILE DESIGN



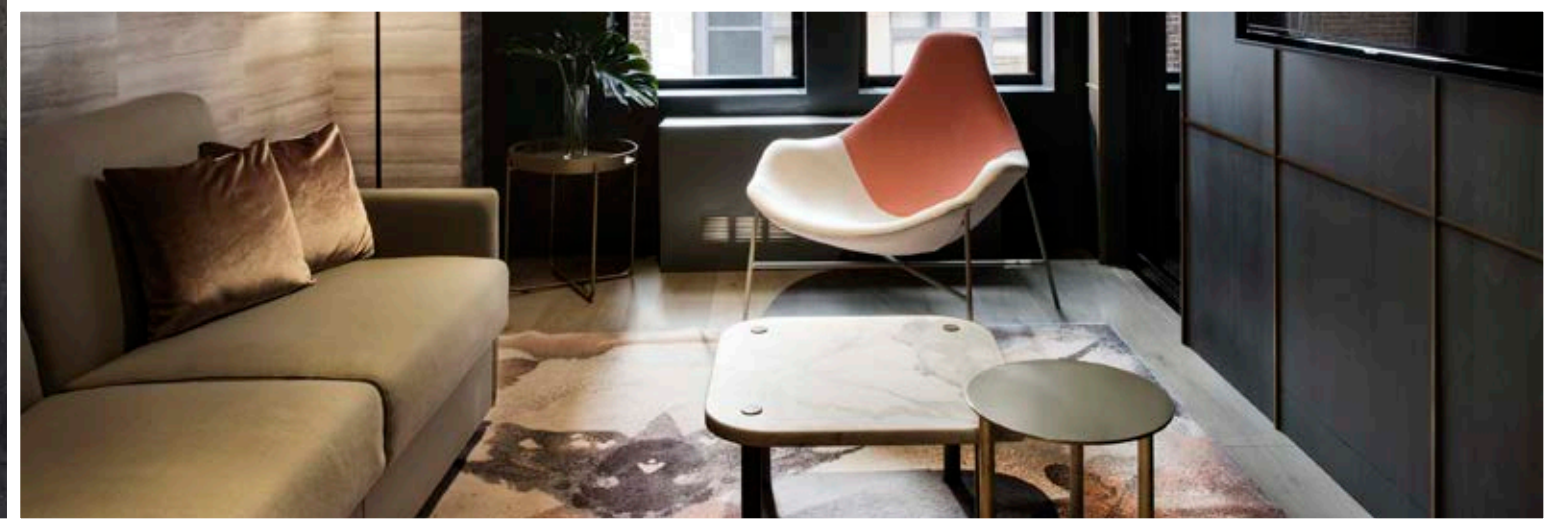
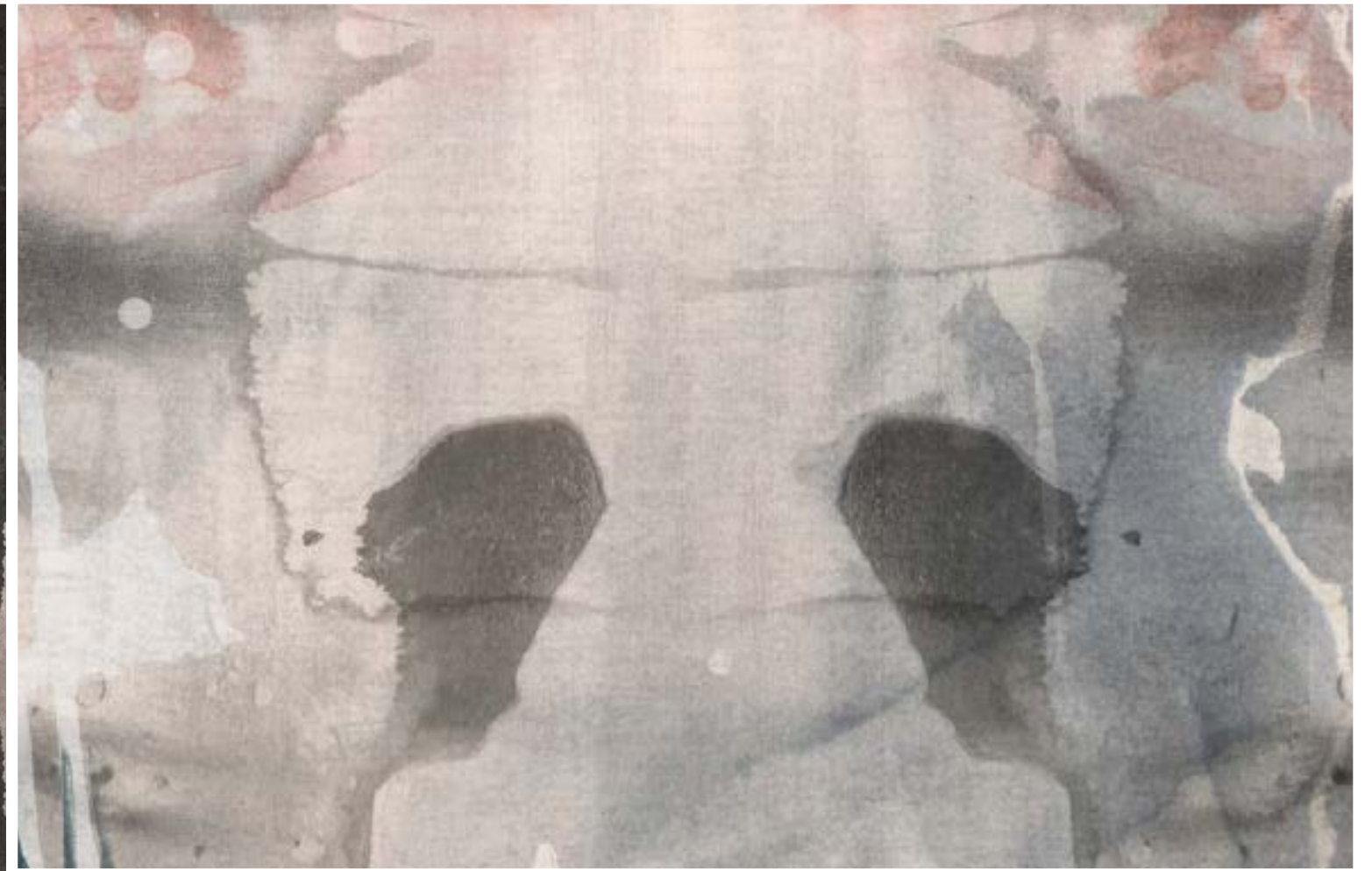
PEAK RESTAURANT FEATURES PANORAMIC VIEWS OF THE ISLAND OF MANHATTAN. THE ENTRY LOUNGE FLOATS ABOVE THE HUDSON RIVER, WHICH SERVED AS AN INSPIRATION FOR THIS LUSH, MONOCHROMATIC, INSET RUG. THE IDEA OF OFFSET RIPPLES IS REINFORCED BY BRONZE METAL INLAIS IN MARBLE SLAB FLOORING. THE ABOVE IMAGES SHOW PROGRESSION FROM CONCEPT RENDERING TO DESIGN DEVELOPMENT TO MILL SCHEMATIC AND FINALLY THE FINISHED PRODUCT.



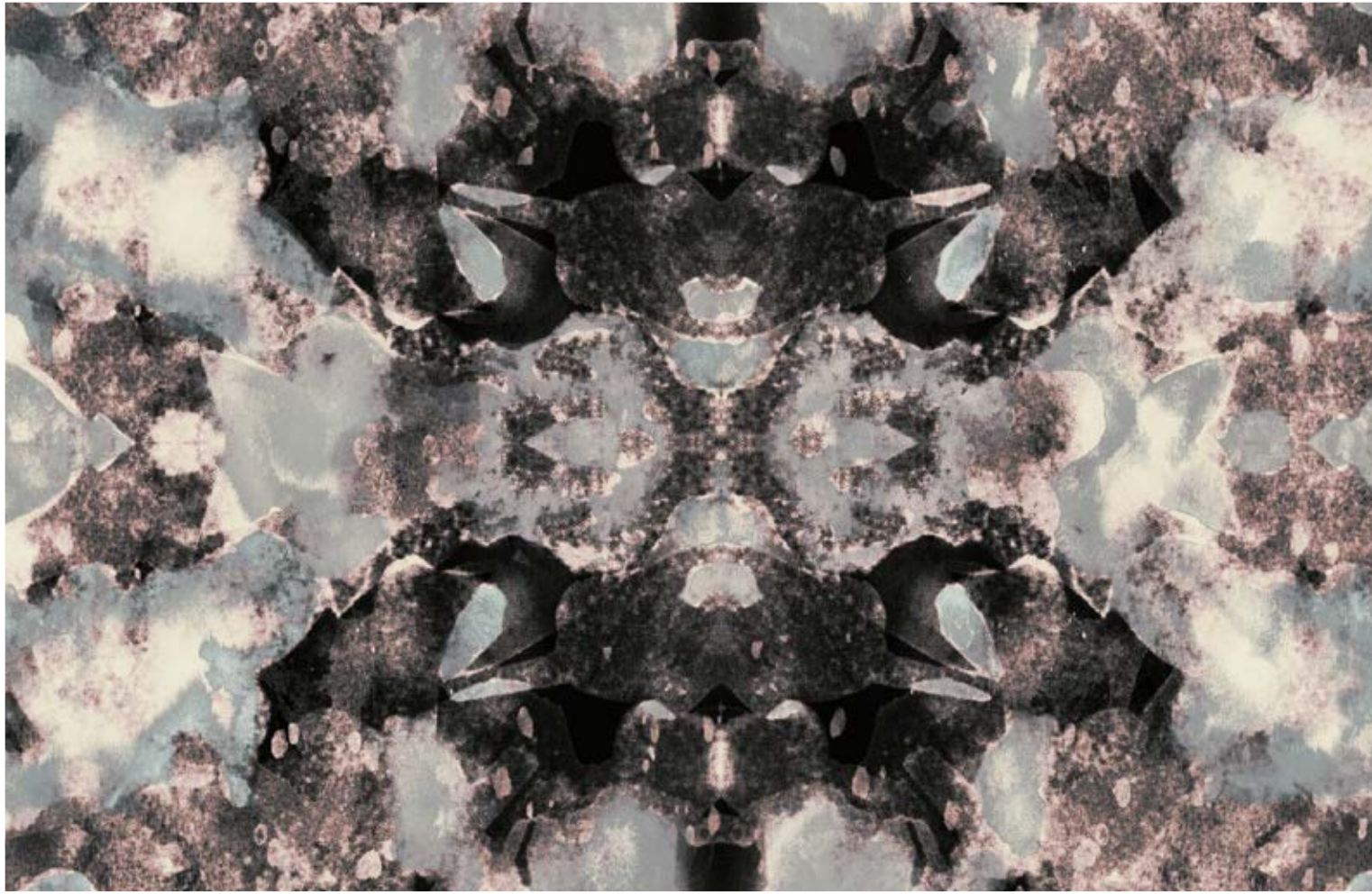
CUSTOM RUG DESIGNS FOR NEMA CHICAGO'S COWORKING CENTER ARE INSPIRED BY ANALOGUE AND DIGITAL WORK PROCESSES. A HAND-SHREDDED DOT-MATRIX PRINT, A KALEIDOSCOPIC CORRUPT IMAGE, AND A BROKEN MONITOR.



NEMA CHICAGO'S LOBBY AND SKYLINE LOUNGE BRING GRIDS AND URBAN PLANNING UNDERFOOT.



MY FIRST DESIGN OPPORTUNITY AT ROCKWELL GROUP CAME IN THE FORM OF THESE HAND-PAINTED WATERCOLOR WORKS. THE DESIGN TEAM'S CONCEPT WAS PLAYFUL AND SURREAL, AND THESE COLORFUL RORSCHACH'S FELL RIGHT INTO PLACE.



THE PENTHOUSE AT TIME HOTEL BUILDS ON THIS IDEA, BUT GRAPHICS ARE MIRRORED ON 2 AXES RESULTING IN KALEIDOSCOPIIC PATTERNS.